

A e r o S y s

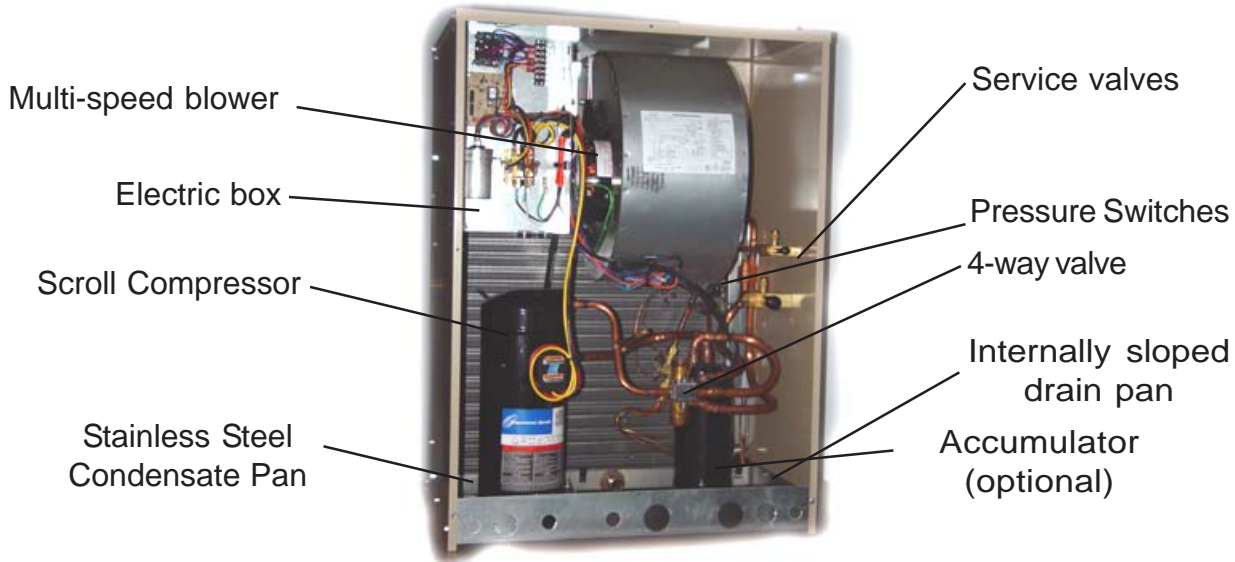
I n c o r p o r a t e d

***Thru-the-wall
Air Cooled Heat Pumps
AeroCon THHP Series
R-22 and R-410A refrigerants***



AeroSys, Inc.
929 Eldridge Drive Hagerstown, Maryland, 21740
Tel (301) 620-0002 Fax (301) 620-0685
www.aerosysinc.com

System View



Design Features

Advanced Scroll Compressor
Advanced outdoor coil design
Bi-directional Thermal Expansion Valve
Corrosion Protection: powder coat over galvaneal, after metal is sheared, punched & formed
Safety Screen painted to match unit
Easy Service Access: electric box location, full front access
Hi & Low Pressure Safety Switches

Low RPM blower
Multi-speed blower motor
No proprietary components
Factory piped service valves, pressure switches and pressure ports
Stainless Steel condensate/defrost pan
5 year Compressor Warranty
THHP systems are available in 3 cabinet sizes

Guide Specifications

General

The air cooled heat pump shall be factory tested prior to shipment. The system shall be listed and labeled in compliance with UL Std. 1995 for Heating and Cooling Equipment by a Nationally Recognized Laboratory.

Cabinet Construction

The cabinet and access panels shall be constructed from heavy gauge galvaneal steel and powder-coated with an attractive neutral color for corrosion protection. The coil and blower discharge shall be protected with a heavy gauge screen.

Compressor

The compressor shall be a high reliability, high efficiency and low sound scroll compressor designed for use with heat pump applications. The compressor shall incorporate an internal discharge gas muffler, internal pressure relief valve and external vibration mounting isolation.

Coil

The coil shall be constructed of copper tubes and aluminum fins and cased with heavy duty galvanized steel header plates.

Motor

The motor shall be a permanent split capacitor (PSC), continuous duty air-over design with internal thermal protection and flexible mounts.

Blower

The blower shall be galvanized treated for corrosion protection and shall be statically and dynamically balanced to minimize vibration and noise. Blowers shall be selected for low rpm and low sound characteristics.

Refrigerant Pressure Switches

The unit shall be supplied with hi and low pressure switches. The pressure switches shall be hermetically sealed, with fixed cut-in and cut-out settings.

R-22 Performance Capacity

Cooling⁽¹⁾ Heating⁽²⁾ Heating⁽³⁾ Design⁽⁺⁾ Design⁽⁺⁾
BTU/H BTU/H BTU/H SEER HSPF

"R"unt Series Heat Pump Units					
THHP-18-R	20,100	18,100	9,700	10.9	7.4
THHP-24-R	24,900	22,000	12,900	10.9	8.4
THHP-30-R	30,000	27,200	16,800	10.9	8.4
"S"hort Series Heat Pump Units					
THHP-18-S	20,200	18,200	9,700	10.9	7.4
THHP-24-S	25,100	22,200	12,900	10.9	8.4
THHP-30-S	30,000	27,400	16,900	10.9	8.5
"T"all Series Heat Pump Units					
THHP-18-T	20,000	17,500	9,700	10.9	7.3
THHP-24-T	24,700	21,000	12,500	10.9	8.1
THHP-30-T	30,000	27,300	16,900	10.9	8.5

R-410A Performance Capacity

Cooling⁽¹⁾ Heating⁽²⁾ Heating⁽³⁾ Design⁽⁺⁾ Design⁽⁺⁾
BTU/H BTU/H BTU/H SEER HSPF

"R"unt Series Heat Pump Units					
THHP-18-RG	18,700	16,900	9,300	10.9	7.3
THHP-24-RG	24,000	21,800	12,700	10.9	8.3
THHP-30-RG	28,300	26,200	16,000	10.9	8.5
"S"hort Series Heat Pump Units					
THHP-18-SG	18,700	17,000	9,300	10.9	7.3
THHP-24-SG	24,100	21,800	12,800	10.9	8.3
THHP-30-SG	28,700	26,300	16,000	10.9	8.5
"T"all Series Heat Pump Units					
THHP-18-TG	18,400	16,700	9,300	10.9	7.3
THHP-24-TG	23,500	21,200	12,600	10.9	8.2
THHP-30-TG	28,600	26,400	16,000	10.9	8.5

ARI 210/240 conditions:

⁽¹⁾ 80°F DB, 67°F WB Indoor & 95°F DB, 75°F WB Outdoor; ⁽²⁾ 70°F DB, 60°F WB Indoor & 47°F DB, 43°F WB Outdoor ⁽³⁾ 70°F DB, 60°F WB Indoor & 17°F DB, 15°F WB Outdoor; ⁽⁺⁾ Values may vary from those specified. Units rated at 37.5 CFM / 1,000 BTUH Cooling Capacity on Evaporator

R-22 Electrical Data

Unit Data@208-230/1/60	THHP-18	THHP-24	THHP-30
THHP Full Load Amps	8.4	9.6	12.2
THHP Min. Circuit Amps	14.2	15.8	19.1
THHP Max Fuse Size	20 AMP	25 Amp	30 Amp
Motor FLA	2.2	2.2	2.2
Compressor RLA/LRA	9.6/45.0	10.9/54.0	13.5/72.5

R-410A Electrical Data

Unit Data@208-230/1/60	THHP-18G	THHP-24G	THHP-30G
THHP Full Load Amps	8.1	9.7	11.2
THHP Min. Circuit Amps	13.5	19.1	19.8
THHP Max Fuse Size	20 AMP	30 Amp	30 Amp
Motor FLA	2.2	2.2	2.2
Compressor RLA/LRA	9.0/48.0	13.5/58.3	14.1/73.0

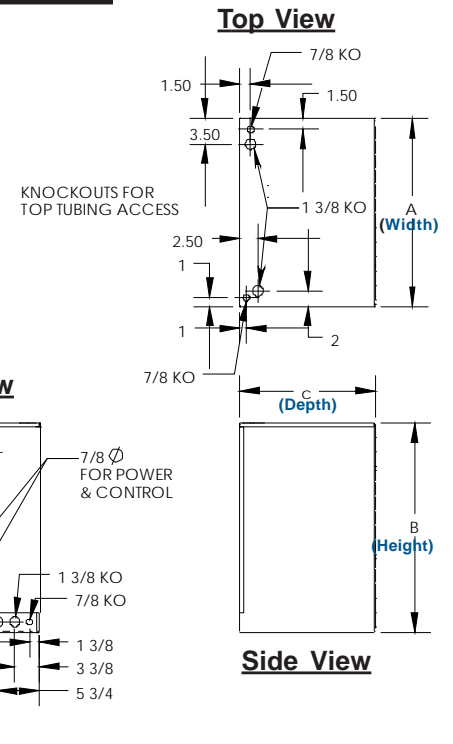
Physical Data

	THHP-18()	THHP-24()	THHP-30()
Liquid Line Conn.	3/8" ODS	3/8" ODS	3/8" ODS
Suction Line Conn.	3/4" ODS	3/4" ODS	3/4" ODS
Condensate Drain Conn	3/4" NPT	3/4" NPT	3/4" NPT
Wt, lbs. (net/shipping)	160/164	162/166	163/167

Dimensional Data

Dimensions (in.)

MODEL	Width		Height		Depth	
	A	B	C	D	E	
THHP-18R	29 1/2	23	18 1/2	8 1/2	13 3/4	
THHP-18S	26	28 5/8	18 1/2	8 1/2	13 3/4	
THHP-18T	23 3/4	32	18 1/2	7 3/4	12 1/2	
THHP-24R	29 1/2	23	18 1/2	8 1/2	13 3/4	
THHP-24S	26	28 5/8	18 1/2	8 1/2	13 3/4	
THHP-24T	23 3/4	32	18 1/2	7 3/4	12 1/2	
THHP-30R	29 1/2	23	18 1/2	8 1/2	13 3/4	
THHP-30S	26	28 5/8	18 1/2	8 1/2	13 3/4	
THHP-30T	23 3/4	32	18 1/2	7 3/4	12 1/2	



Three sizes to choose from!



Standard Grille



Optional Wall Sleeve mounted on unit



Optional Wall Sleeve only



Optional Architectural Grille

Other AeroSys Products

CeilMate Ceiling mounted critical cooling application air conditioners in sizes from 1 ton to 3 ton capacities.



AeroCon THHP Series heat pumps in sizes from 1-1/2 ton to 2-1/2 ton capacities.

AeroCool DDX Series D.X. air handlers in sizes from 1-1/2 ton to 2-1/2 ton capacities.

AeroCon Centrifugal condensing units from 3 to 5 tons

AeroCool DCW Series chilled water air handlers in sizes from 1-1/2 ton to 2-1/2 ton capacities.



AeroPure Refrigerants, certified to ARI 700.



Listing # E112295

Complies with
UL 1995
Heating and Cooling
Equipment

Accepted for
Use
City of NY
Dept. of Bldgs
MEA-85-04-E

Specifications are subject to change without notice

Form THHP-1008

AeroSys, Inc.