



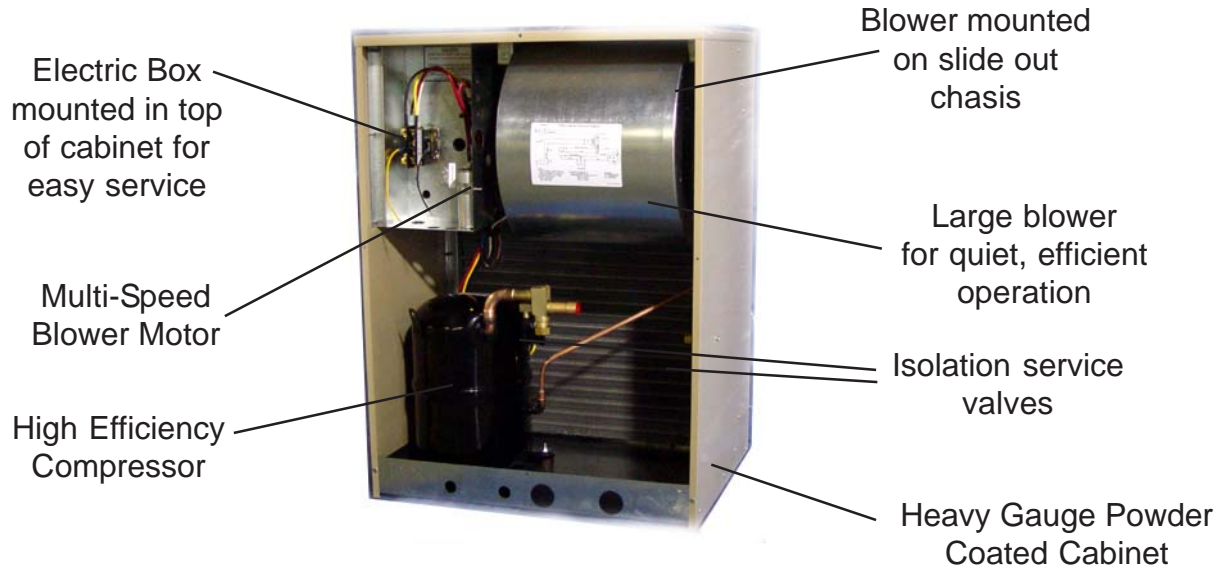
Thru-the-wall Air Cooled Condensing Units

AeroCon THDC Series



AeroSys, Inc.
929 Eldridge Drive, Hagerstown, Maryland, 21740
Tel (301) 620-0002 Fax (301) 620-0685
www.aerosysinc.com

System View



Design Features

High Efficiency Compressor
Advanced coil design
Powder coat over galvanneal, after the metal is sheared, punched and formed for superior corrosion protection
Safety screen painted to match unit
Low RPM blower

Multi-speed blower motor
No proprietary components
Factory piped service valves and pressure ports
5 year compressor warranty
Easy, full front access for service
THDC systems are available in 4 cabinet sizes for customer flexibility.

Guide Specifications

General- factory tested prior to shipment. The system is listed and labeled in compliance with UL Std. 1995 for Heating and Cooling Equipment by a Nationally Recognized Laboratory.

Cabinet Construction- constructed from heavy gauge steel and powder-coated with a neutral color for attractiveness and corrosion protection. The coil and blower discharge are protected with a heavy gauge screen.

Coil- constructed of copper tubes and aluminum fins and cased with heavy duty galvanized steel header plates.

Motor- permanent split capacitor (PSC), continuous duty air-over design with internal thermal protection and flexible mounts.

Blower- galvanized treated for corrosion protection and shall be statically and dynamically balanced to minimize vibration and noise. Blowers shall be selected for low rpm and low sound characteristics.

Selected Optional Equipment

Architectural Grille- extruded aluminum anodized architectural louver grille. The grille can be powder coated to match the color requirements of the project.

Low Ambient Control- Blower speed control allows system to operate down to 20°F ambient.

High and Low Pressure Switches- Factory piped and wired safety pressure switches add additional safeguards against loss of refrigerant or high refrigerant system pressures.



THDC-()R LX Series
(shown without sound blanket)

FOUR CABINETS TO SELECT FROM



Standard Grille



Optional Architectural Grille mounted on Wall Sleeve



Optional Wall Sleeve mounted on unit



Performance Data

	BTU's	Watts	SEER
“P” Series Condensing Units			
THDC-18P	20,700	1,900	11.2
THDC-24P	25,200	2,300	10.9
THDC-30P	29,800	2,700	10.9
“Runt” Series Condensing Units			
THDC-18R	20,700	1,900	11.2
THDC-24R	25,200	2,300	10.9
THDC-30R	29,800	2,700	10.9
“Short” Series Condensing Units			
THDC-18S	20,500	1,900	11.2
THDC-24S	24,600	2,200	11.0
THDC-30S	30,000	2,700	11.0
“Tall” Series Condensing Units			
THDC-18T	20,400	1,900	11.1
THDC-24T	25,300	2,200	11.2
THDC-30T	29,800	2,700	10.9

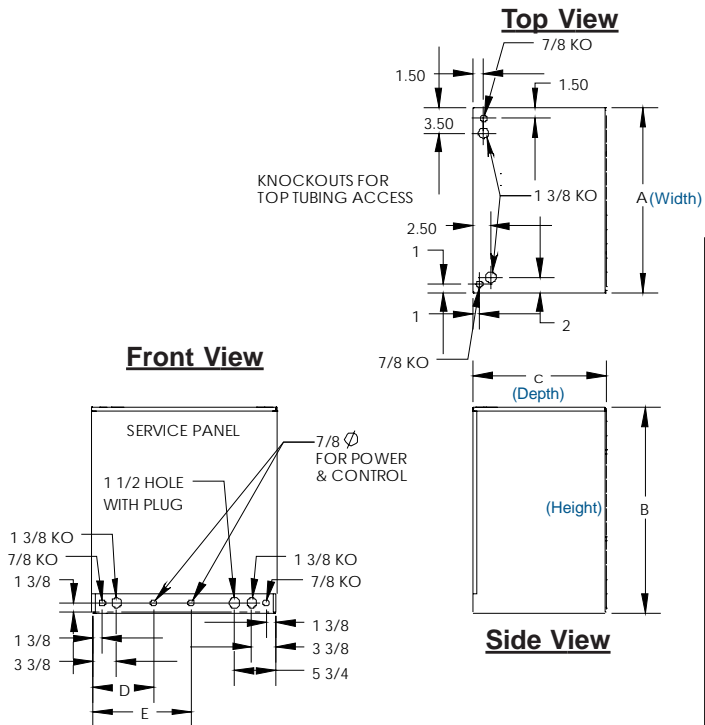
ARI 210/240 conditions

Electrical Data

Unit Data@208-230/1/60	THDC-18	THDC-24	THDC-30
THDC Full Load Amps	8.6	10.7	12.2
THDC Min. Circuit Amps	13.0	14.5	17.5
THDC Max Fuse Size	20 AMP	20 Amp	30 Amp
Motor FLA	2.2	2.2	2.2
Compressor RLA/LRA	8.6/49.0	9.8/50.0	12.2/73.0

Model	THDC-18()	THDC-24()	THDC-30()
Liquid Line Connection	3/8"ODS	3/8"ODS	3/8"ODS
Suction Line Connection	3/4"ODS	3/4"ODS	3/4"ODS
Compressor, qty 1	Hermetic	Hermetic	Hermetic
Weight, lbs. (net/shipping)	170 lbs/175 lbs	179 lbs/185 lbs	191 lbs/198 lbs

Dimensional Data



	Width	Height	Depth		
MODEL	A	B	C	D	E
THDC-18P	33 ³ / ₄	19	18 ¹ / ₂	25	32
THDC-18R	29 ¹ / ₂	23	18 ¹ / ₂	8 ¹ / ₂	13 ³ / ₄
THDC-18S	26	28 ⁵ / ₈	18 ¹ / ₂	8 ¹ / ₂	13 ³ / ₄
THDC-18T	23 ³ / ₄	32	18 ¹ / ₂	6	10
THDC-24P	33 ³ / ₄	19	18 ¹ / ₂	25	32
THDC-24R	29 ¹ / ₂	23	18 ¹ / ₂	8 ¹ / ₂	13 ³ / ₄
THDC-24S	26	28 ⁵ / ₈	18 ¹ / ₂	8 ¹ / ₂	13 ³ / ₄
THDC-24T	23 ³ / ₄	32	18 ¹ / ₂	6	10
THDC-30P	33 ³ / ₄	19	18 ¹ / ₂	25	32
THDC-30R	29 ¹ / ₂	23	18 ¹ / ₂	8 ¹ / ₂	13 ³ / ₄
THDC-30S	26	28 ⁵ / ₈	18 ¹ / ₂	8 ¹ / ₂	13 ³ / ₄
THDC-30T	23 ³ / ₄	32	18 ¹ / ₂	6	10

Other AeroSys Products

CeillMate Ceiling mounted critical cooling application air conditioners in sizes from 1 ton to 3 ton capacities.



AeroCon THHP Series heat pumps in sizes from 1-1/2 ton to 2-1/2 ton capacities.

AeroCool DDX Series D.X. air handlers in sizes from 1-1/2 ton to 2-1/2 ton capacities.

AeroCon Centrifugal condensing units from 3 to 5 tons

AeroCool DCW Series chilled water air handlers in sizes from 1-1/2 ton to 2-1/2 ton capacities.

AeroPure Refrigerants, certified to ARI 700.



Listing # E112295

Complies with
UL 1995
 Heating and Cooling
 Equipment



Accepted for
 Use
 City of NY
 Dept. of Bldgs
 MEA-85-04-E