

A e r o S y s

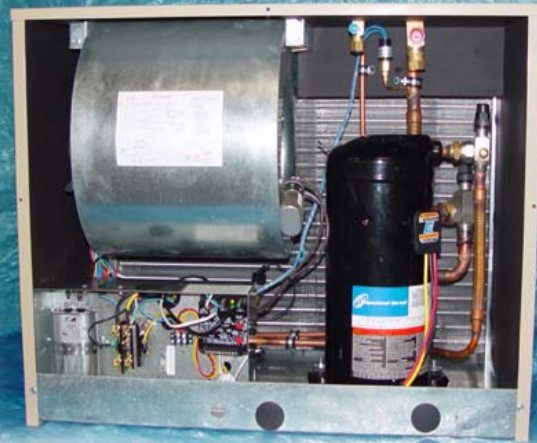
I n c o r p o r a t e d

Air Cooled Condensing Units THDC-36() 3 ton Series

System View and Benefits

Standard Features

- Commercial grade construction
- Three cabinet configurations
- Large condenser coil
- Scroll compressor
- Powder coated cabinet and grille over heavy gauge galvaneal steel
- Low speed, large blower
- Slide-out condenser blower motor



Optional Features

- High and low pressure switches
 - Variable blower speed control for low ambient operation
 - Compressor Rotalocks
 - Sound insulated cabinet
 - Compressor sound blanket
 - (**LX Series** includes all of the above options)
- Other available options:
- Architectural grilles
 - Wall Sleeves



AeroSys, Inc.

929 Eldridge Drive Hagerstown, Maryland 21740

Tel (301) 620-0002 Fax (301) 620-0685

www.aerosysinc.com

Cooling Capacity

	BTU's	Watts	SEER
THDC-36R (runt)	35,300	3,400	10+
THDC-36S (short)	35,400	3,300	10+
THDC-36T (tall)	35,900	3,200	10+

ARI 210/240 conditions

Electrical Data

Unit Data@208-230/1/60	THDC-36
System Max Fuse Size	30 Amp
Wire Size, AWG	10 ga
Motor FLA	3.3
Compressor RLA/LRA	17.9/88.0

Guide Specifications

General

The air cooled condensing unit shall be factory tested prior to shipment. The system shall be listed and labeled in compliance with UL Std. 1995 for Heating and Cooling Equipment by a Nationally Recognized Laboratory.

Cabinet Construction

The cabinet and access panels shall be constructed from heavy gauge steel and powder-coated with neutral color attractiveness for corrosion protection. The coil and blower discharge shall be protected with a heavy gauge screen.

Coil

The coil shall be constructed of copper tubes and aluminum fins and cased with heavy duty galvanized steel header plates.

Motor

The motor shall be a permanent split capacitor (PSC), continuous duty air-over design with internal thermal protection and flexible mounts.

Compressors

The system shall incorporate scroll compressors mounted on vibration isolators. Units shall include isolation service valves and shall be charged with R-22 refrigerant.

Blower

The blower shall be galvanized treated for corrosion protection and shall be statically and dynamically balanced to minimize vibration and noise. Blowers shall be selected for low rpm and low sound characteristics.

Selected Optional Features



Architectural Grille

The unit shall have an extruded aluminum anodized architectural louver grille. The grille can be powder coated to match the color requirements of the project.

Wall Sleeves

Systems are available with heavy gauge powder coated

wall sleeves to facilitate equipment installation or prepare the wall opening prior to equipment installation.

Refrigerant Pressure Switches

The unit shall be supplied with high and low pressure switches. The pressure switches shall be hermetically sealed, with fixed cut-in and cut-out settings.

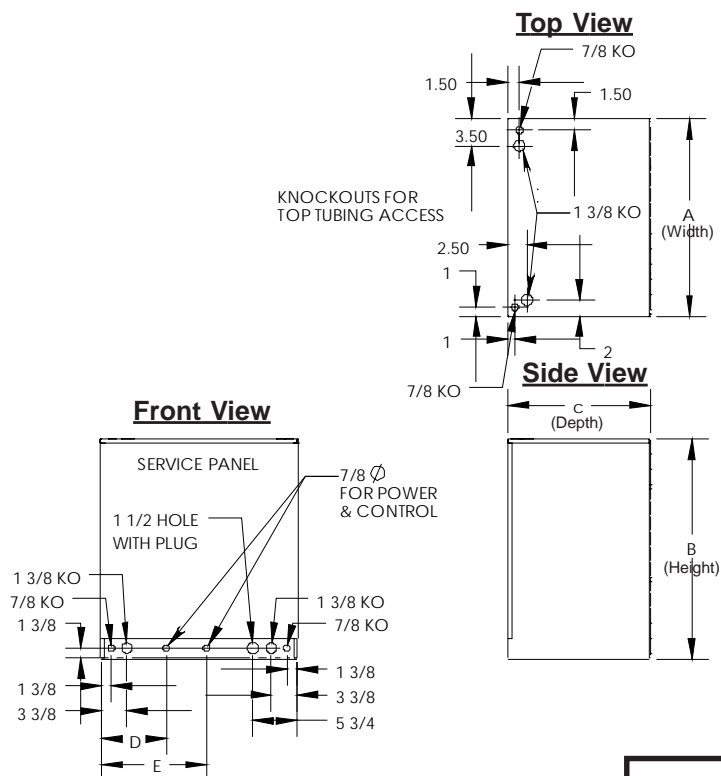
Dimensional Data



Listing # E112295

**Complies with
UL 1995
Heating and Cooling
Equipment**

Accepted for
Use
City of NY
Dept. of Bldgs
MEA-85-04-E



Dimensions (in.)

	Width	Height	Depth		
MODEL	A	B	C	D	E
THDC-36R	29 ¹ / ₂	23	18 ¹ / ₂	8 ¹ / ₂	13 ³ / ₄
THDC-36S	26	28 ⁵ / ₈	18 ¹ / ₂	8 ¹ / ₂	13 ³ / ₄
THDC-36T	23 ³ / ₄	32	18 ¹ / ₂	7 ³ / ₄	12 ¹ / ₂

Model	THDC-36()
Liquid Line Connection	3/8" ODS
Suction Line Connection	3/4" ODS
Weight, lbs. (net/shipping)	197 lbs/208 lbs

Other AeroSys Products

AeroCool DCW Series chilled water air handlers in sizes from 1-¹/₂ ton to 2-¹/₂ ton capacities.

AeroCon THDC and THHP Series condensing units and heat pumps design for thru-the-wall installation in 1-¹/₂ to 2-¹/₂ ton capacities

AeroPure Refrigerants, certified to ARI 700.

CeiMate™ Ceiling Mounted air conditioners from 1 to 3 ton capacities in air, water, glycol and chilled water cooling methods



Specifications are subject to change without notice

AeroSys, Inc.

Cooling and Heating Equipment for Residential Multi-Tenant Housing



DCW Series fluid air handlers, available in sizes from 600 cfm to 1100 cfm for applications using central plant supplied chilled water and hot water for temperature control.

DDX Series refrigerant air handlers are available from 1 $\frac{1}{2}$ to 3 ton capacities and available for R-22 or R-410A.



Thru-the-wall units: **THDC** Series air conditioners and **THHP** Series heat pumps, in four physical sizes, each in 1 $\frac{1}{2}$, 2 and 2 $\frac{1}{2}$ ton capacities. Systems are used in applications needing horizontal condenser air discharge or external static pressure capability.

Precision Temperature and Humidity Control



Innovative **CeilMate™** Series 2x4 grid ceiling mounted spot coolers and ducted units in 5 capacities from 1 to 3 tons and 6 cooling methods.

These systems are designed for commercial IAQ (Indoor Air Quality) applications where cooling, heating, humidifying, dehumidifying, ventilating and air conditioning solutions are required. **CeilMate™** systems are ceiling mounted air conditioners, designed for reliable 24/7 operation.

Applications include:

- Telecom, LAN and data relay facilities
- Data centers and Clean rooms
- Medical MRI and CAT scan rooms
- Laboratories

Refrigerant Reclamation and Cylinder Recertification Services

AeroSys, Inc. is an EPA and DOT certified facility serving the HVAC community through wholesalers.

